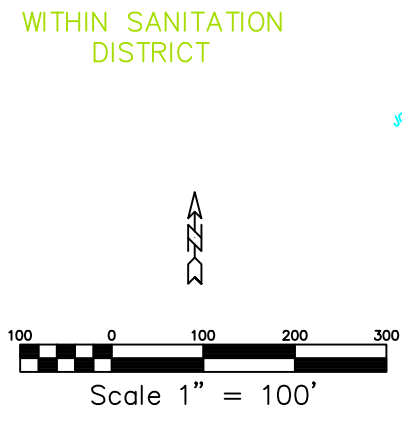
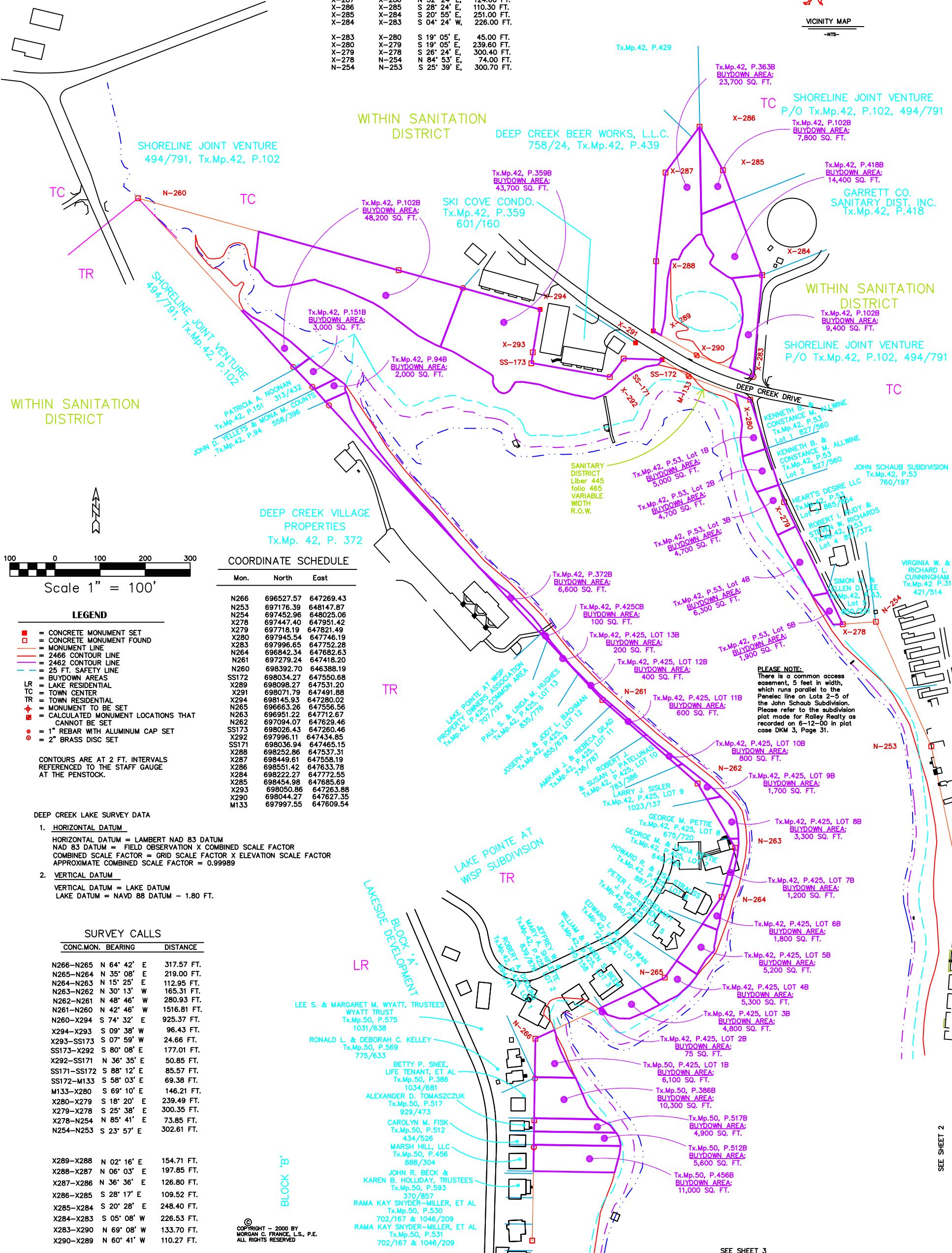
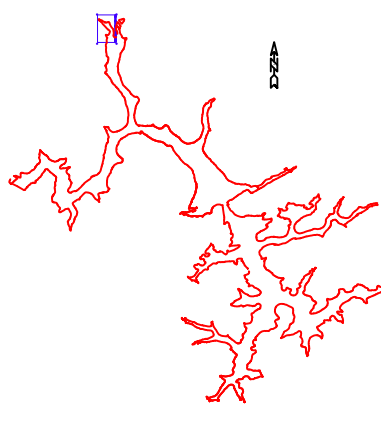


PENELEC CALLS

CONC.MON.NO.	BEARING	DISTANCE
N-267	N 01° 01' W	1164.80 FT.
N-266	N 64° 59' E	312.80 FT.
N-265	N 33° 23' E	220.70 FT.
N-264	N 13° 36' E	113.00 FT.
N-263	N 31° 50' W	163.60 FT.
N-262	N 50° 33' W	278.20 FT.
N-261	N 43° 48' W	1493.40 FT.
N-260	S 75° 51' E	1160.10 FT.
X-294	S 08° 01' W	97.10 FT.
X-293	SS-173 S 08° 01' W	24.30 FT.
SS-173	X-292 S 81° 16' E	176.63 FT.
X-292	SS-171 N 35° 18' E	51.25 FT.
SS-171	SS-172 N 89° 31' E	85.23 FT.
SS-172	X-291 N 59° 29' W	69.40 FT.
X-291	X-289 N 35° 18' E	45.00 FT.
X-289	X-288 N 02° 09' E	160.00 FT.
X-288	X-287 N 04° 10' E	197.50 FT.
X-287	X-286 N 32° 24' E	124.60 FT.
X-286	X-285 S 28° 24' E	110.30 FT.
X-285	X-284 S 20° 55' E	251.00 FT.
X-284	X-283 S 04° 24' W	226.00 FT.
X-283	X-280 S 19° 05' E	45.00 FT.
X-280	X-279 S 19° 05' E	239.60 FT.
X-279	X-278 S 26° 24' E	300.40 FT.
X-278	N-254 N 84° 53' E	74.00 FT.
N-254	N-253 S 25° 39' E	300.70 FT.



COORDINATE SCHEDULE

Mon.	North	East
N266	696527.57	647269.43
N253	697176.39	648147.87
N254	697452.96	648025.06
X278	697447.40	647951.42
X279	697718.19	647821.49
X280	697945.54	647746.19
X283	697996.65	647752.28
N264	696842.34	647682.63
N261	697279.24	647418.20
N260	698392.70	646388.19
SS172	698034.27	647550.68
X289	698098.27	647531.20
X291	698071.79	647491.88
X294	698145.93	647280.02
N265	696663.26	647556.67
N263	696951.22	647712.67
N262	697094.07	647629.46
SS173	698028.43	647260.46
X292	697996.11	647434.85
SS171	698036.94	647465.15
X288	698252.86	647537.31
X287	698449.61	647558.19
X286	698551.42	647633.78
X284	698222.27	647772.55
X285	698454.98	647685.69
X293	698050.86	647263.88
X290	698044.27	647627.35
M133	697997.55	647609.54

- LEGEND**
- CONCRETE MONUMENT SET
 - CONCRETE MONUMENT FOUND
 - MONUMENT LINE
 - 2466 CONTOUR LINE
 - 2462 CONTOUR LINE
 - 25 FT. SAFETY LINE
 - BUYDOWN AREAS
 - LAKE RESIDENTIAL
 - TOWN CENTER
 - TOWN RESIDENTIAL
 - MONUMENT TO BE SET
 - CALCULATED MONUMENT LOCATIONS THAT CANNOT BE SET
 - 1" REBAR WITH ALUMINUM CAP SET
 - 2" BRASS DISC SET
- CONTOURS ARE AT 2 FT. INTERVALS REFERENCED TO THE STAFF GAUGE AT THE PENSTOCK.

- DEEP CREEK LAKE SURVEY DATA
- HORIZONTAL DATUM**
HORIZONTAL DATUM = LAMBERT NAD 83 DATUM
NAD 83 DATUM = FIELD OBSERVATION X COMBINED SCALE FACTOR
COMBINED SCALE FACTOR = GRID SCALE FACTOR X ELEVATION SCALE FACTOR
APPROXIMATE COMBINED SCALE FACTOR = 0.99989
 - VERTICAL DATUM**
VERTICAL DATUM = LAKE DATUM
LAKE DATUM = NAVD 88 DATUM - 1.80 FT.

SURVEY CALLS

CONC.MON.	BEARING	DISTANCE
N266-N265	N 64° 42' E	317.57 FT.
N265-N264	N 35° 08' E	219.00 FT.
N264-N263	N 15° 25' E	112.95 FT.
N263-N262	N 30° 13' W	165.31 FT.
N262-N261	N 48° 46' W	280.93 FT.
N261-N260	N 42° 46' W	1516.81 FT.
N260-X294	S 74° 32' E	925.37 FT.
X294-X293	S 09° 38' W	96.43 FT.
X293-SS173	S 07° 59' W	24.66 FT.
SS173-X292	S 80° 08' E	177.01 FT.
X292-SS171	N 36° 35' E	50.85 FT.
SS171-SS172	S 88° 12' E	85.57 FT.
SS172-M133	S 58° 03' E	69.38 FT.
M133-X280	S 69° 10' E	146.21 FT.
X280-X279	S 18° 20' E	239.49 FT.
X279-X278	S 25° 38' E	300.35 FT.
X278-N254	N 85° 41' E	73.85 FT.
N254-N253	S 23° 57' E	302.61 FT.
X289-X288	N 02° 16' E	154.71 FT.
X288-X287	N 06° 03' E	197.85 FT.
X287-X286	N 36° 36' E	126.80 FT.
X286-X285	S 28° 17' E	109.52 FT.
X285-X284	S 20° 28' E	248.40 FT.
X284-X283	S 05° 08' W	226.53 FT.
X283-X290	N 69° 08' W	133.70 FT.
X290-X289	N 60° 41' W	110.27 FT.

© COPYRIGHT - 2000 BY MORGAN C. FRANCE, L.S., P.E. ALL RIGHTS RESERVED

SHEET NO. 1

DRAWING 1, MCHENRY COVE

DEEP CREEK PROJECT
BUY DOWN SURVEY

PROJECT

PREPARED BY: MORGAN C. FRANCE, L.S., P.E.
10 North Third Street
Oakland, Maryland 21550
(301) 334-2305

REVISIONS

7/03/00	3/07/01
8/00	6/11/04
	12/05/00

APPROVED BY: MORGAN C. FRANCE

DRAWN BY: SUSAN N. EVANS PERANNO and MARGARET A. JORDAN
DWC: MCHENI
123\C\DATA\EP\PROJECTS\062000\MCHENI

SEE SHEET 2

SEE SHEET 3